

\$342,800 - 107, 6000 Somervale Court Sw, Calgary

MLS® #A2236228

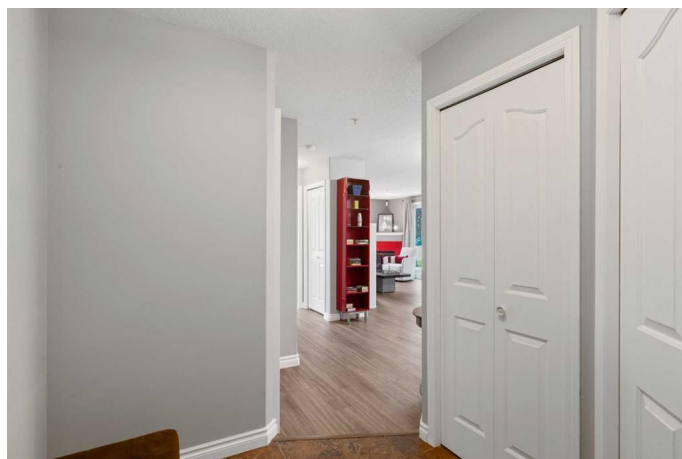
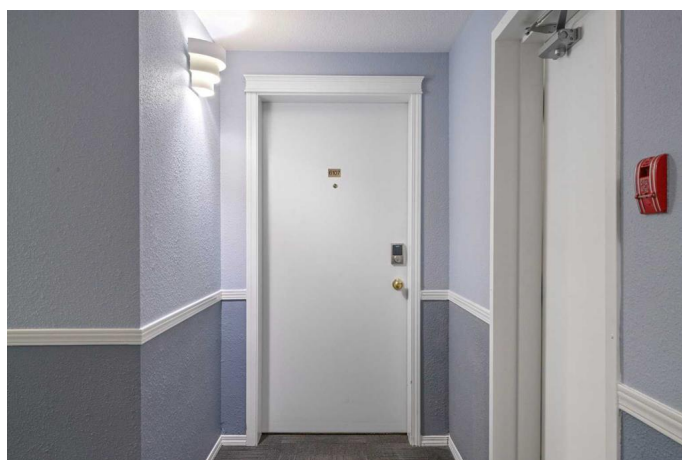
\$342,800

2 Bedroom, 2.00 Bathroom, 960 sqft

Residential on 0.00 Acres

Somerset, Calgary, Alberta

Welcome to Somerset Crossing! This spacious 2-bedroom, 2-bathroom south-facing unit offers 960sf of comfortable, updated living space—all conveniently located on the ground floor of a well-managed complex. Step inside to an open-concept layout combining the living room, dining area, and kitchen—perfect for both everyday living and entertaining. The kitchen features epoxy granite countertops, ample cabinetry, a breakfast bar, garburator and high end Bosch appliances that are only 6 years old. The primary bedroom is a generous size and includes a walk-through custom closet and a private 3-piece ensuite. The second bedroom, currently used as a home office, is situated near the main 4-piece bathroom with a jacuzzi tub, and you'll also find in-suite laundry and a dedicated storage space on the outside patio. This END UNIT enjoys extra privacy and natural light, and boasts a large private patio that faces peaceful green space and mature trees—ideal for relaxing or a BBQ. You'll appreciate the durable vinyl plank flooring (installed in 2020) throughout the home. ADT security system is installed. Parking is a breeze with two stalls: one titled underground and the other an assigned surface stall located conveniently across from the patio. Dogs and cats are permitted with Board approval. All utilities are included in the condo fees, making this a truly hassle-free homeownership or investment opportunity. Situated just minutes from the Bridlewood/Somerset LRT station,



YMCA, Walmart, shopping, dining, and other amenities, this location can't be beat! Don't forget to check out the 3D video tour.

Built in 2000

Essential Information

| | |
|----------------|-------------------|
| MLS® # | A2236228 |
| Price | \$342,800 |
| Bedrooms | 2 |
| Bathrooms | 2.00 |
| Full Baths | 2 |
| Square Footage | 960 |
| Acres | 0.00 |
| Year Built | 2000 |
| Type | Residential |
| Sub-Type | Apartment |
| Style | Single Level Unit |
| Status | Active |

Community Information

| | |
|-------------|------------------------------|
| Address | 107, 6000 Somervale Court Sw |
| Subdivision | Somerset |
| City | Calgary |
| County | Calgary |
| Province | Alberta |
| Postal Code | T2Y 4J4 |

Amenities

| | |
|----------------|---|
| Amenities | Elevator(s), Secured Parking, Visitor Parking |
| Parking Spaces | 2 |
| Parking | Assigned, Parkade, Stall, Titled, Underground |
| # of Garages | 1 |

Interior

| | |
|-------------------|---|
| Interior Features | Breakfast Bar, Jetted Tub, Laminate Counters, Open Floorplan, Vinyl Windows |
| Appliances | Dishwasher, Electric Range, Garage Control(s), Microwave Hood Fan, Refrigerator, Washer/Dryer Stacked, Window Coverings |

| | |
|-----------------|---|
| Heating | Baseboard, Hot Water, Natural Gas |
| Cooling | None |
| Fireplace | Yes |
| # of Fireplaces | 1 |
| Fireplaces | Gas, Living Room, Mantle, Blower Fan, Glass Doors |
| # of Stories | 4 |

Exterior

| | |
|-------------------|--------------------------|
| Exterior Features | BBQ gas line, Storage |
| Roof | Flat, Rubber |
| Construction | Vinyl Siding, Wood Frame |
| Foundation | Poured Concrete |

Additional Information

| | |
|----------------|----------------|
| Date Listed | July 8th, 2025 |
| Days on Market | 21 |
| Zoning | M-C2 d75 |

Listing Details

| | |
|----------------|------------------------|
| Listing Office | Royal LePage Benchmark |
|----------------|------------------------|

Data is supplied by Pillar 9â„¢ MLS® System. Pillar 9â„¢ is the owner of the copyright in its MLS® System. Data is deemed reliable but is not guaranteed accurate by Pillar 9â„¢. The trademarks MLS®, Multiple Listing Service® and the associated logos are owned by The Canadian Real Estate Association (CREA) and identify the quality of services provided by real estate professionals who are members of CREA. Used under license.